

In today's business applications, you need more than a table filled with data. Users expect data to be intuitively visualized in a user-friendly format and to be accessible from any location.

The smartGeo Framework delivers on these high standards. It connects SAP NetWeaver™ with the kind of geographic features that have proven essential to day-to-day business: map visualization, route calculation, geocoding and geographic POI search. These geo-functionalities are provided by PTV xServer components.

The PTV xServer components are seamlessly integrated with SAP NetWeaver™ and can be used over the Internet or within the SAP™ GUI. Since the smartGeo Framework is integrated in SAP NetWeaver™ and comes with an array of standard interfaces, SAP users can benefit directly from the full functionality of PTV xServer components.

The smartGeo Framework and xServer components are fully transparent for applications – including ParCon's easyTrack, a smartGeo Framework-based solution for finding routes and optimizing logistics KPIs (see reverse).

smartGeo Framework for SAP™

Easily integrate geo-functionalities

ParCon smartGeo Framework for SAP™ provides

- ▶ Effortless integration of PTV xServer components with SAP applications
- ▶ Full access to PTV xServer features within SAP-ERP
- ▶ Powerful, transparent interfaces
- ▶ Seamless integration in established IT environments
- ▶ Integration of on-board units and mobile devices.

- ▶ Modular software components („Only as much application as necessary!“)
- ▶ Detailed map material for Europe and North America (Canada, USA, Mexico), Australia, Arabian Peninsula, South-east Asia, etc.
- ▶ Additional data on vehicles, toll charges, etc.

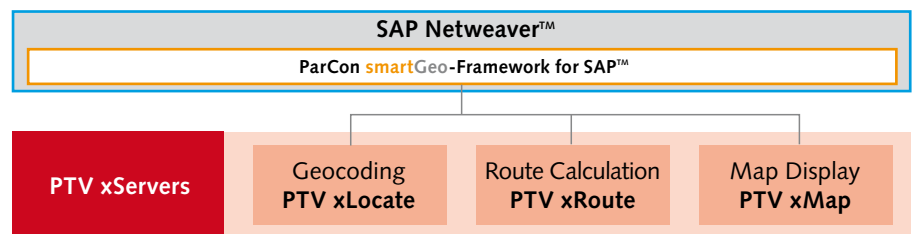
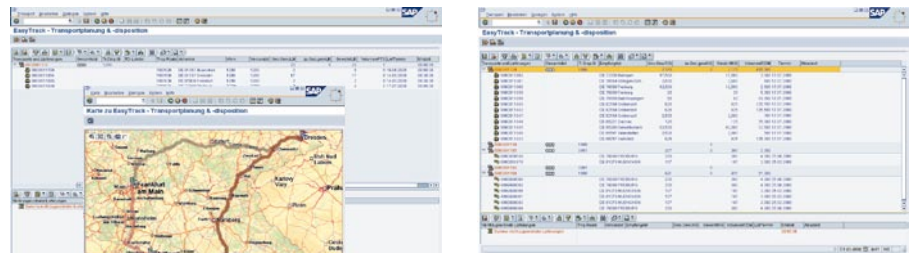
ParCon is a full-service SAP™ consultancy offering application consulting, standard solutions to expand SAP™ functionality and support with customization projects.

ParCon supports its clients throughout the lifecycle, from concepts to implementation to technical support.

ParCon's standard and custom-built solutions based on SAP NetWeaver™ have proven their worth internationally in transport and logistics, retail and wholesale, services and manufacturing.

PTV xServer comes as standard with

- ▶ Platform-independent logistics features and geo-functionalities (Linux, Windows)
- ▶ Standard web service interfaces (XML, SOAP)
- ▶ Scalability to accommodate future growth



The smartGeo Framework unleashes the power of PTV xServer's geo-functionalities right in SAP - including digital mapping, route calculation and geographic POI searches.

easyTrack uses the smartGeo Framework for PTV xServer components. Dispatchers can thus start scheduling SAP™ shipments early based on sales orders. This dramatically speeds up the average sales order processing times in the business process from order receipt to delivery. SAP™ shipments can also be maintained based on deliveries, if this method is preferred.

Besides planning shipments, easyTrack also has modules for monitoring, managing and billing orders, deliveries and shipments. To provide this functionality, easyTrack comes with bidirectional interfaces for communicating with on-board units, mobile devices and GPS systems.

easyTrack provides

- ▶ Extension of SAP™ shipments
- ▶ Dynamic route optimization
- ▶ Dijkstra's algorithm
- ▶ Real-time fleet monitoring
- ▶ Intuitive user controls
- ▶ Drag and drop map navigation
- ▶ SAP™ GUI and web browser interface
- ▶ smartGeo Framework for SAP™
- ▶ PTV xServer geo-functionalities
- ▶ Multiscreen support
- ▶ Communication with mobile devices

easyTrack

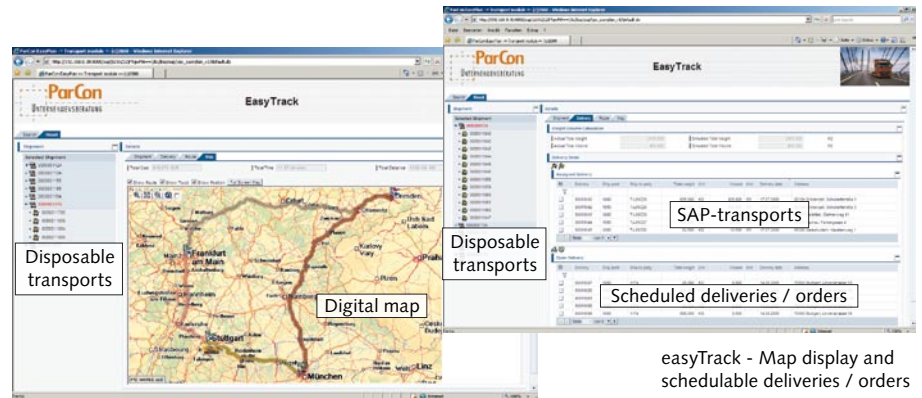
Shipment planning and scheduling

easyTrack at a glance

- ▶ Order- and delivery-based planning/scheduling for SAP™
- ▶ Displaying routes along with customer sites and vehicles
- ▶ Calculating the fastest routes
- ▶ Optimizing various KPIs
- ▶ Rendering data from mobile devices in real time
- ▶ Communicating with mobile devices

Optimizing route calculations

Routes are immediately re-optimized if changes are made to the shipment. Optimization criteria can include route distance, travel time, etc., depending on the configuration.



easyTrack - Map display and schedulable deliveries / orders

Real-time fleet monitoring

Vehicle GPS positions are displayed on the map in real time for an unlimited number of vehicles. A wide range of operational data can be analyzed and displayed (handling time in hot zone, expected return time, status of parts requiring maintenance, load compartment temperature, etc.)

Intuitive operation

The user interface is designed to be intuitive and easy to use from either a web browser or the SAP™ GUI. With a single click, you can assign orders / deliveries in the unscheduled activities list to SAP™ shipments. Coloured pins identify all starting points, destinations and stops on the digital map.