

PTV Intertour/Dispatch is the planning system for partial and complete loads. It is particularly designed for flexible trip planning with various points of loading and unloading. This software offers you a valuable tool for rolling wave scheduling.

# Rolling wave scheduling

## Range of applications

PTV Intertour/Dispatch provides functions specialised in rolling wave planning of trips and vehicle operations. The difference between conventional depot-based trip planning and PTV Intertour/Dispatch is that all kinds of open trip structures can also be managed, which are typical of national and international long-distance transportation.

In this way, cost-efficient subsequent orders or return loads are allocated - depending on the vehicles' availability related to location and time. You can combine orders with any kind of loading and unloading to mixed trips. The automatic trip optimisation caters to the specific requirements for „A to B“ freight transports.

## Telematics connection

PTV Intertour/Dispatch already provides connections to widely-used telematics systems. Planned trips can be transferred to the telematics system and therefore directly to the vehicle. In the same way, information on the current order status and the position of the vehicle can be transferred from the vehicle to PTV Intertour/Dispatch. This information is then available for trip monitoring and further operation planning. The scheduler always has a clear overview of the status of the trip plan and can immediately react to eventualities by rescheduling and informing those involved.

## Typical tasks

PTV Intertour/Dispatch provides specific functionalities for the following applications:

### ► **Transport management**

As logistics provider you benefit from the internal order management as well as from an order management with import interfaces. The trip planning can be divided, according to your requirements, into user areas and delivery areas in order to display allocations of schedulers to areas and responsibilities. The planned trips form the basis for planning the loads and vehicles directly in PTV Intertour/Dispatch. Order management enables the orders to be split, which means transports are broken down into several partial routes, for example pre-run, main run and post-run. The planned trips can also be transferred to other systems: for example to warehouse management as a basis for picking and invoicing, or to accounts for freight invoicing, billing and crediting.

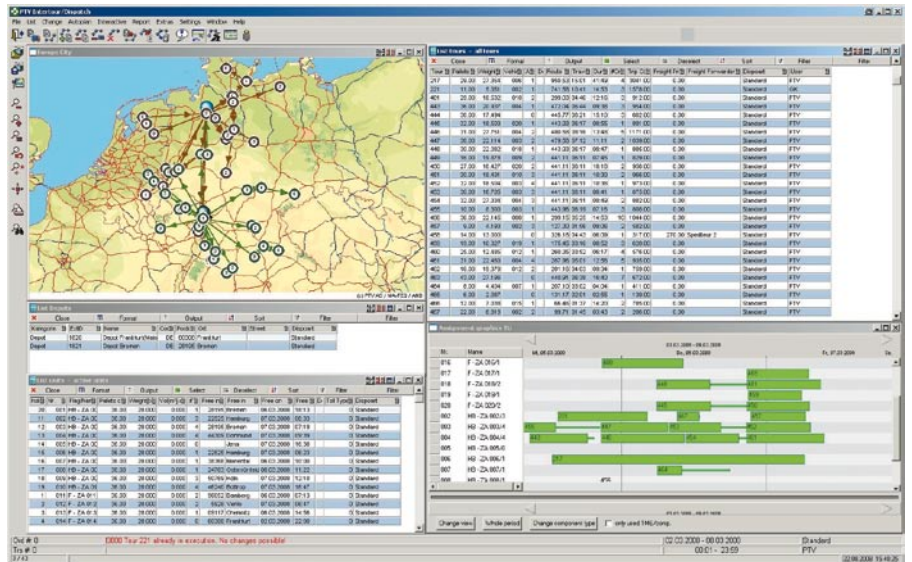
### ► **Freight planning**

As dispatcher you put the emphasis on planning and allocating the loads and trips. PTV Intertour/Dispatch with comprehensive calculation tools will help you to choose the right forwarder for your trips. Even during the planning process the system calculates the freight costs based on agreed tariffs or finds the most suitable forwarder for a trip. If required, the data is compared to a route-related cost calculation.

## Integration

A software can only be used effectively if it is adapted to existing processes and integrated into the existing system environment. This also applies to the trip planning software PTV Intertour/Dispatch. This is the key to successful introduction and application, especially when working with the complex processes involved in transport planning and processes.

PTV Intertour/Dispatch can be directly integrated into your system using extensive import and export interfaces. In addition we also provide integration using the PTV LogisticsPlatform which can be used to integrate additional functions into the entire process. The add-on module PTV Intertour/Cargo can be used to automatically issue credit notes.



**PTV AG**  
 Business Field Logistics Software  
 Stumpfstraße 1  
 76131 Karlsruhe, Germany

Phone: +49 721 96 51-8199  
 E-mail: [logistics@ptv.de](mailto:logistics@ptv.de)  
[www.ptv.com](http://www.ptv.com)