

Traffic Management:
Traffic Management Centre (VMZ) Berlin:
VMZ keeps Berlin moving



Extensive services improve mobility in and around Berlin

Since July 2000 the first VMZ public transport services for Berlin have been available online. (VMZ = Traffic Management Centre)

User: **Consortium VMZ Berlin** or Berlin citizens and visitors using traffic information services.

Task: Input and evaluation of all relevant traffic information and creation of traffic information services to improve the city's traffic situation.

Solution: PTV develops an intermodal route planner. The system MONET (Modelling Network) is used to calculate the traffic condition and current travel times for dynamic routing systems.

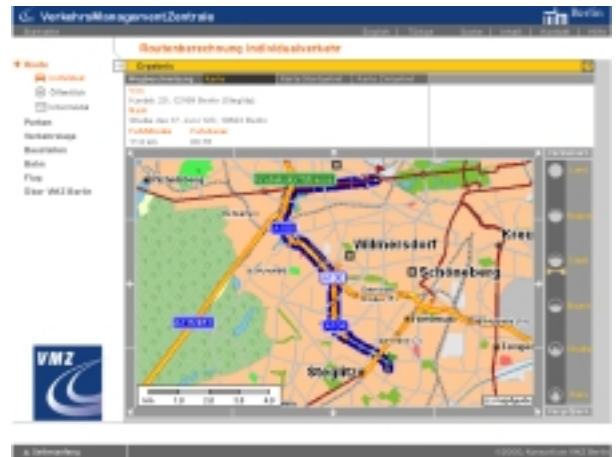
A consortium of debis Mobility Services (project management) and Siemens AG is in charge of the state's project, represented by Berlin's Senate Department of Urban Development. The extensive project is divided into various phases.

The VMZ Content platform Berlin includes all traffic and transport relevant information, such as parking facilities or traffic problems caused by major events. Existing data is integrated and linked with new information. Based on this data pool, the VMZ provides various mobility services which are available via Internet and mobile end devices.

Traffic conditions and forecasts

The Siemens product CONCERT is used for the VMZ Content Platform in Berlin. This system includes various modules such as the simulation component MONET/VISUM-online by PTV for generating and forecasting traffic situations.

MONET stores statistical as well as dynamic data and completes the information by analysing the traffic conditions. Moreover the system provides a traffic forecast for the next 15 – 30 minutes by using a traffic simulation program. The calculation of the current and forecasted traffic situation is being up-dated in cycles of 5 to 15 minutes. Similar to weather forecasts, MONET forecasts traffic volumes, travel times and network capacities.



Dynamic and intermodal routing

Various information services, which are based on data from the Content Platform, are created by taking the current traffic condition into account. The dynamic and intermodal route planner is a central service which helps the traveller to find the quickest route by taking the current traffic situation into consideration. Means of transportation can be changed at park-and-ride facilities.

Major components of this Service Platform and the required services are provided by PTV, Karlsruhe, and OneStepAhead, Stuttgart.

Project manager Dr. Martin Fellendorf, PTV: "In Berlin we use traffic models, which have already successfully proven their efficiency during the EXPO 2000. These models are being developed further. The VMZ Berlin provides an extensive system which will finally improve the traffic situation in the capital city."